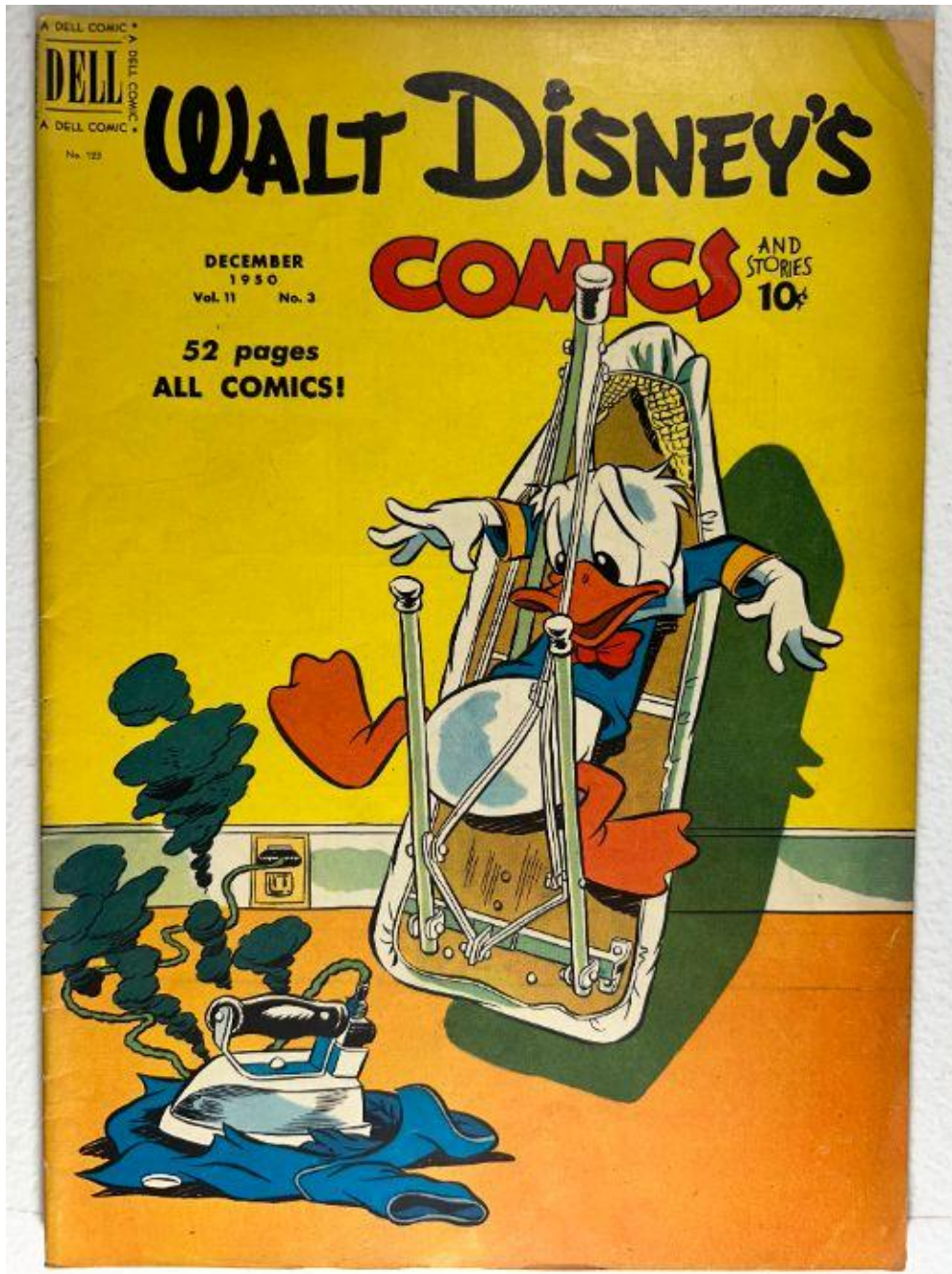


■ **Walt Disney's Comics and Stories – Vol. 11 No. 3  
(December 1950)**

Evaluation Date: April 5, 2026



# SUMMARY OF OBSERVATIONS

*Walt Disney's Comics and Stories – Vol. 11 No. 3 (December 1950)*

The front cover presents as a visually impressive copy with excellent retained yellow background color and strong, well-defined character artwork. Donald Duck is shown caught in a falling painting rig, rendered with bold lines and high color saturation. The masthead remains fully legible, and overall cover gloss appears well preserved. The spine is visually straight and clean, consistent with the user's description of a "beautiful spine." Despite this strong presentation, **distinct damage is visible at the upper-right corner of the front cover**, which extends beyond surface wear and appears to influence the alignment and condition of multiple interior pages.

Close inspection of the upper-right corner reveals **localized creasing, compression, and minor paper deformation**, visible as a blunted corner profile with disturbed paper fibers. This corner damage is not isolated to the front cover: corresponding distortion and corner softening are visible on the inside front cover and continue through several interior pages, indicating the damage affects the entire book block rather than a single page. No full-thickness tears are visible at this corner, but the repeated deformation across pages confirms a cumulative impact event.

Interior pages remain complete and printed color remains vivid and well registered. Uniform cream-to-light-tan toning is present, consistent with age, with slightly heavier toning at page edges. The centerfold remains attached at both staples. The spine shows minimal wear, with no splitting. Both staples remain seated; light surface oxidation is visible on the exposed staple legs without flaking or paper migration. The brittleness test image shows the paper bending smoothly, indicating retained flexibility.

---

## FRONT COVER — OBSERVATIONS

*Walt Disney's Comics and Stories – Vol. 11 No. 3 (December 1950)*

### Photo Validation (img\_2330 Front Cover)

The image is evenly lit, sharply focused, and fully frames the entire front cover. All edges, corners, and the full spine are visible. Resolution is sufficient to assess corner deformation, surface wear, and ink clarity.

### Scene & Composition

The cover depicts Donald Duck tumbling while suspended in a painting apparatus, set against a solid yellow background with ground elements below. The composition is centered beneath the masthead and unobstructed.

## Findings

Cover colors remain vibrant and evenly saturated with no visible fading. The masthead lettering remains sharp and legible. The **upper-right corner shows notable deformation**, with visible compression and creasing affecting approximately **~10–14 mm inward** from the corner along both the top and right edges. The corner appears blunted, with disturbed paper fibers and a slight inward curl. Light surface creasing radiates from this corner area. No full-thickness tear is visible at the corner. The remaining edges show minimal wear. The spine edge appears clean and straight with strong color retention. Lower corners show very light rounding only.

## Overall Impression

The front cover is visually striking with excellent color and a strong spine, but exhibits **clear upper-right corner damage** that is structurally relevant due to its continuation into the interior pages.

---

## BACK COVER — OBSERVATIONS

*Walt Disney's Comics and Stories – Vol. 11 No. 3 (December 1950)*

### Photo Validation (img\_2331 Back Cover)

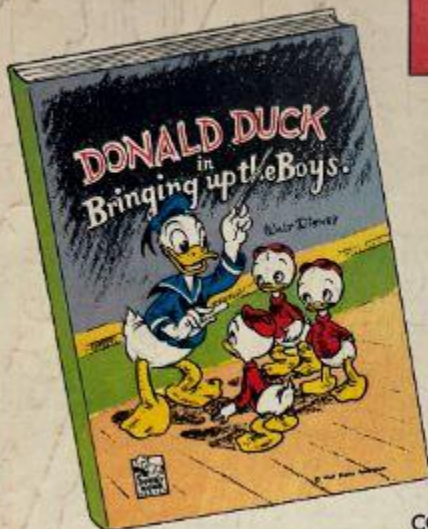
The back cover image is in focus, evenly lit, and shows the full cover, edges, corners, and spine edge.

## Findings

The back cover shows uniform tan/cream toning consistent with age. Advertisements and text remain fully legible. Light corner rounding is present. The **upper-right corner of the back cover does not show damage to the same extent as the front**, appearing more square and intact, indicating the primary impact affected the front cover and interior more directly. No stains or tears are visible.

## Overall Impression

The back cover remains intact with light, age-consistent wear and no significant corner damage.



**FREE!**

WITH EACH CHRISTMAS SUBSCRIPTION THIS BEAUTIFULLY LITHOGRAPHED BOOK IN FULL COLOR SIZE 4 $\frac{3}{4}$ " x 6 $\frac{1}{2}$ " 36 PAGES

AND, IN ADDITION, A COLORFUL GIFT CARD WILL BE SENT TO EACH SUBSCRIBER WITH YOUR NAME SHOWN AS DONOR

**12 BIG ISSUES  
FUN THE YEAR ROUND**

**WALT DISNEY'S  
COMICS AND STORIES**

The only magazine of authentic Disney Characters  
Clean, Wholesome Comics and Stories

Mail to: K. K. PUBLICATIONS, Inc. DEPT. 12 Poughkeepsie, N. Y.

Enclosed please find \$\_\_\_\_\_ for which please send a \_\_\_\_\_ year subscription to **WALT DISNEY'S COMICS AND STORIES** and the Free DONALD DUCK BOOK, to:

PLEASE PRINT  
Name \_\_\_\_\_

Street and Number \_\_\_\_\_

City or Town \_\_\_\_\_ Mailing Dist. No. \_\_\_\_\_ State \_\_\_\_\_

Donor's Name \_\_\_\_\_

Street and Number \_\_\_\_\_

City or Town \_\_\_\_\_ Mailing Dist. No. \_\_\_\_\_ State \_\_\_\_\_

**SUBSCRIPTION RATES**

5 years—\$4.00      1 years—\$2.50      2 years—\$1.75      1 year—\$1.00

If you wish to send more than one subscription use plain paper giving above information

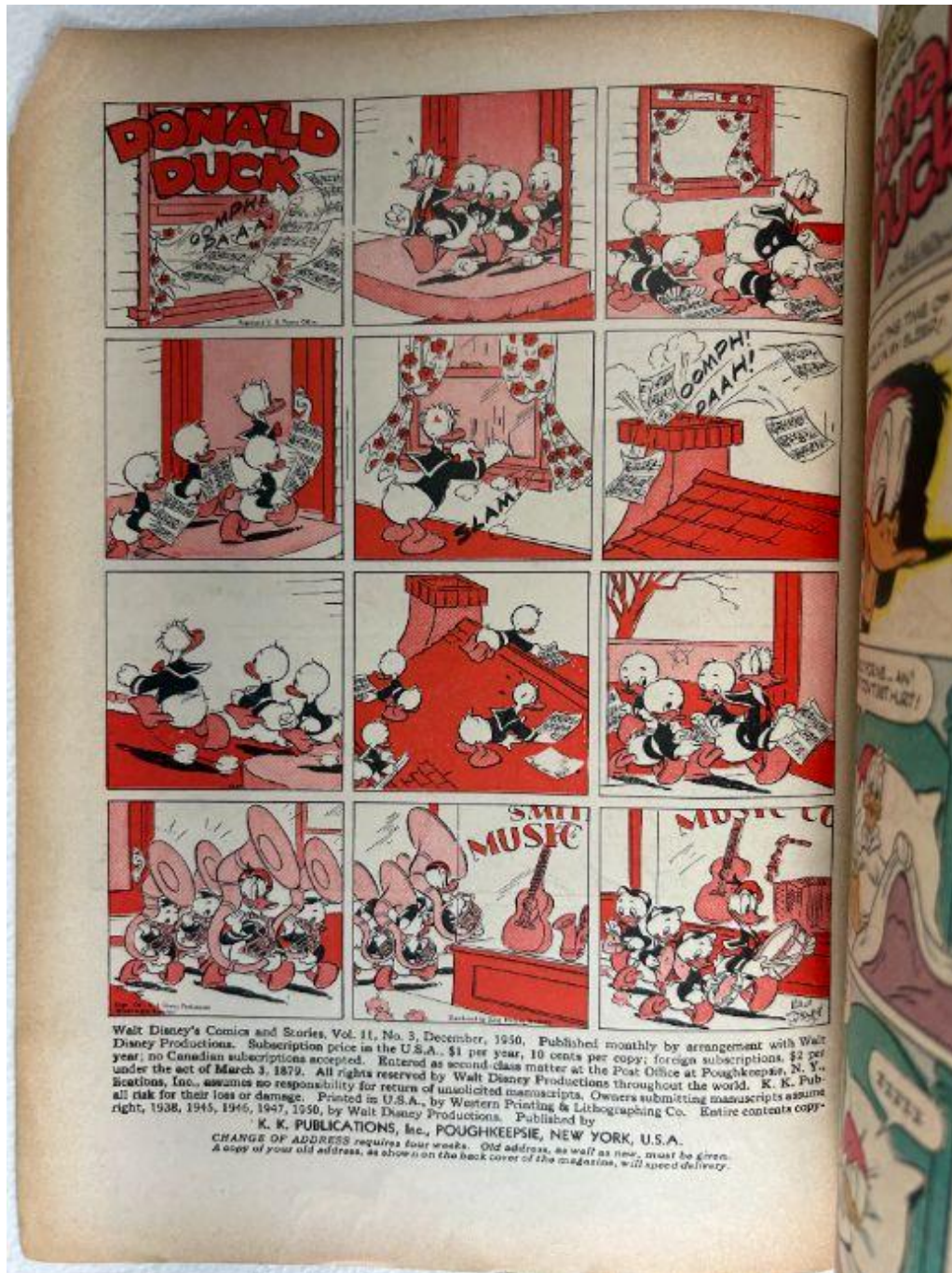


# INSIDE FRONT COVER — OBSERVATIONS

Walt Disney's Comics and Stories – Vol. 11 No. 3 (December 1950)

## Photo Validation (img\_2332 Inside Front Cover)

The image is straight-on, well lit, and clearly shows the hinge and upper-right corner.



## Findings

Paper color is cream. The **upper-right corner shows visible compression and creasing**, extending approximately **~8–12 mm inward**, corresponding spatially with the front-cover damage. The hinge area is intact with minor compression only. No writing, stamps, or staining observed. Indicia text is visible and legible.

## Overall Impression

The inside front cover confirms that the upper-right corner damage extends beyond the exterior cover.

---

## INTERIOR PAGES — OBSERVATIONS

*Walt Disney's Comics and Stories – Vol. 11 No. 3 (December 1950)*

### Photo Validation (img\_2333–img\_2337 Inside Pages)

All interior page images are clear, evenly lit, and show corners, margins, gutters, and artwork panels.

### Page Color

Cream to light tan.

## Findings

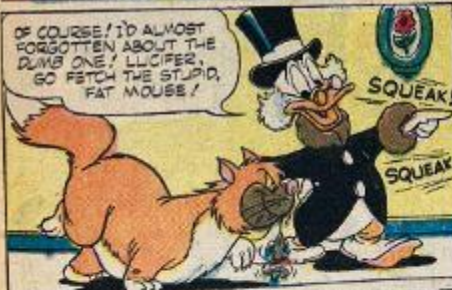
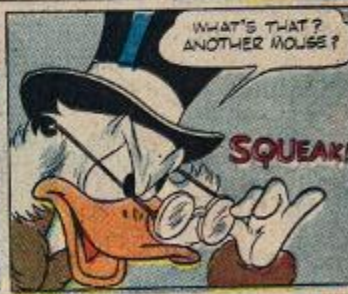
Interior pages display uniform age-related toning, slightly darker at the margins. Color printing remains vivid across all photographed pages. The **upper-right page corners show consistent corner compression and softening**, affecting approximately **~6–10 mm** inward on several consecutive pages, aligning with the front-cover corner damage. No interior tears, writing, or stains are visible. Gutters remain intact.

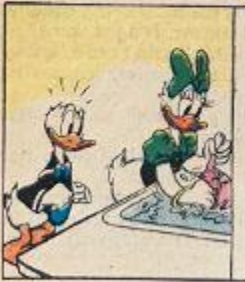
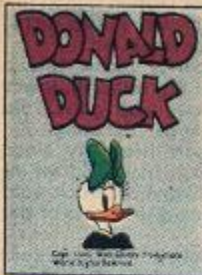
## Overall Impression

Interior pages are complete and visually strong, with **repeated upper-right corner deformation confirming full-book impact damage**.

WALT DISNEY  
**The Little Bad Wolf**









# CENTERFOLD — OBSERVATIONS

Walt Disney's Comics and Stories – Vol. 11 No. 3 (December 1950)

## Photo Validation (img\_2338 Centerfold)

The image clearly shows the complete centerfold and both staples.



## Findings

The centerfold remains attached at both staples. Fold line shows mild compression only. Upper-right corner of the centerfold page shows slight softening consistent with earlier pages.

## Overall Impression

The centerfold is attached and stable, with minor corner effects consistent with the overall book.

---

## SPINE — OBSERVATIONS

*Walt Disney's Comics and Stories – Vol. 11 No. 3 (December 1950)*

### Photo Validation (img\_2339 Spine)

Side-profile image clearly shows full spine length.

## Findings

The spine is straight, well aligned, and shows minimal wear. No splitting is visible. Color remains strong along the spine fold.



## Overall Impression

Spine condition is excellent relative to age.

---

# STAPLES — OBSERVATIONS

*Walt Disney's Comics and Stories – Vol. 11 No. 3 (December 1950)*

## Upper Staple

### Photo Validation (img\_2340 Upper Staple)

Macro image is clear and focused.



### Findings

The upper staple is seated. **Light surface rust is visible** along portions of the exposed staple legs. Surrounding paper shows light compression (~3–4 mm) with no pull-through.

### Overall Impression

Upper staple is intact with minor oxidation only.

---

## Lower Staple

### Photo Validation (img\_2341 Lower Staple)

Macro image clearly shows the staple and surrounding paper.



### Findings

The lower staple remains embedded. **Light surface rust** is present along the staple legs, similar to the upper staple. Paper compression is visible (~3–4 mm), without tearing.

### Overall Impression

Lower staple remains structurally sound with minor oxidation.

---

# BRITTLENESS TEST — OBSERVATIONS

*Walt Disney's Comics and Stories – Vol. 11 No. 3 (December 1950)*

## Photo Validation (img\_2342 Brittleness Test)

The image clearly shows page flex.



## Findings

The page bends in a smooth arc with no visible fiber fracture or flaking.

## Overall Impression

The paper demonstrates retained flexibility.